

Utility generation line card



EATON

Powering Business Worldwide

INTEGRATED POWER SOLUTIONS



Integrated Power Assembly



Integrated Power Assembly



Deposit on Base Enclosure

MEDIUM VOLTAGE COMPONENTS AND ASSEMBLIES



VCP-W Switchgear Metal-Clad
5–38 kV, 1200–4000 (FC) A



VCP-W Switchgear Arc-Resistant
5–38 kV, 1200–4000 (FC) A



MEF Switchgear Front Access
5–15 kV, 600–2000 (FC) A



MVS Metal-Enclosed 5–38 kV,
800–1200 (FC) A,
Plus Arc-Resistant



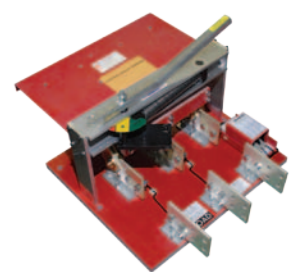
VCP-W Generator Breaker, 5–15 kV,
1200–7000 (FC) A



High Resistance Grounding System
2.4–4.2 kV, 6A Maximum



Non-Segregated Bus 600V–38 kV,
1200–5000A



Pringle® Isolation Switch up to 15 kV,
800–6000A

LOW VOLTAGE ASSEMBLIES



LV Switchgear, Metal-Enclosed
208–600V, 2000–10,000A



LV Switchgear, Corner with Front
Access, 208–600V, 2000–10,000A

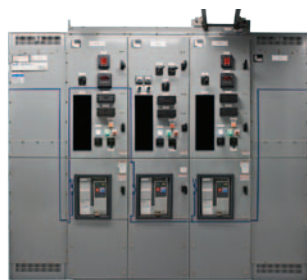


High Resistance Grounding System,
600V, 5A Maximum



Unit Substation Transformers
and Dry-Type Transformers
208V–34.5 kV, 112.5 kVA–20 MVA

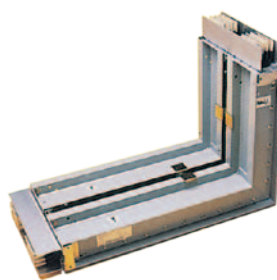
LOW VOLTAGE ASSEMBLIES, CONTINUED



LV Switchgear, Arc-Resistant
208–600V, 2000–10,000A



LV Non-Segregated and Pow-R-Way III® Busway 600V, 225–5000A,
24–600 Vdc, 225–7500 Adc



AC and DC Switchboards
120–600 Vac/Vdc, 800–5000A

MOTOR CONTROL AND DRIVES



Ampgard® MV Starters 2.2–7.2 kV,
up to 8000 hp



Ampgard MV Starters Arc-Resistant,
2.2–7.2 kV, up to 8000 hp



Ampgard Reduced Voltage Starters,
2.3–4.8 kV, 400–720A



Ampgard MV AFD 2.4–4.16 kV,
up to 4500 hp

LV MOTOR CONTROL CENTERS AND DRIVES



Freedom LV MCC 600–3200A,
Size 1–7



Freedom FlashGuard® LV MCC
600–3200A, Size 1–7



LV Adjustable Frequency Drives
208–690V, 1–5000 hp

STANDARD PRODUCTS AND MISCELLANEOUS



Panelboards AC and DC, 120–600V,
15–2500A



Retrofit Panelboards AC, 240V,
15–225A



Safety Switch, up to 600 Vac or Vdc,
30–1200A



Solar Source Combiner Box
up to 600 Vdc, 310–1520A

STANDARD PRODUCTS AND MISCELLANEOUS, CONTINUED



Double-Throw Safety Switch
120–600 Vac, 250 Vdc, 30–800A



Transfer Switch, 120–600V,
100–4000A



UPS, Single- and Three-Phase
120–600V, 350 VA–750 kVA



Protective Relays for Motor,
Feeder, Transformer and
Generator Protection



Metering—Power Quality



Metering—Basic and Retrofit



Partial Discharge Detection

MEDIUM VOLTAGE VACUUM REPLACEMENT BREAKERS



Westinghouse Type DHP and DH
4.16–13.8 kV, 1200–3000A



GE Type AM, 4.16–13.8 kV,
1200–3000A



Allis-Chalmers Type AM, MA, FA, FB
and FC, 4.16–13.8 kV, 1200–3000A



Federal Pacific Type DST 4.16–13.8 kV,
1200–2000A



McGraw-Edison Type PSD and WSA
4.16–13.8 kV, 1200–2000A



ITE Type HV and HK 4.16–13.8 kV,
1200–2000A

MEDIUM VOLTAGE VACUUM STARTER REPLACEMENTS



Westinghouse Type DHP, DH and 50L2, 5 kV, up to 2500 hp



GE Type AM, 5 kV, up to 2500 hp



ITE Type HK, 5 kV, up to 2500 hp

LOW VOLTAGE AIR REPLACEMENT BREAKERS



Westinghouse Type DBL and DB up to 600V, 600–3000A



ITE Type LKD, LK and K up to 600V, 600–3000A



GE Type AKU, AKR and AK up to 600V, 600–3000A



Allis-Chalmers Type LAF and LA up to 600V, 600–3000A



Federal Pacific Type FP and FM up to 600V, 600–3000A

LOW VOLTAGE VACUUM STARTER REPLACEMENTS



Westinghouse/Cutler-Hammer® Type DB and DS up to 575V, up to 400 hp

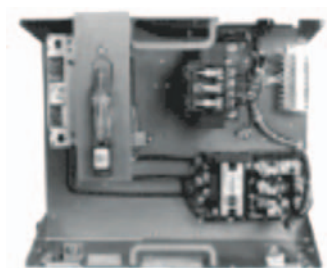


ITE Type KB and K up to 575V, up to 400 hp

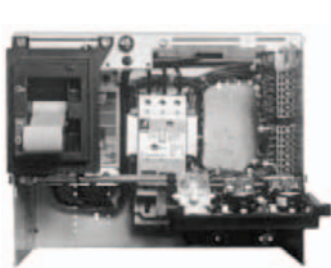


GE Type AKRU and AK up to 575V, up to 400 hp

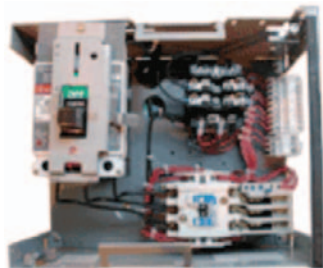
LOW VOLTAGE MOTOR CONTROL BUCKET REPLACEMENTS



Cutler-Hammer 9800 Unitrol MCC,
1956–1974, up to 600V



Westinghouse Advantage MCC
1991–Present, up to 600V



Cutler-Hammer F10 Unitrol MCC
1972–1989, up to 600V



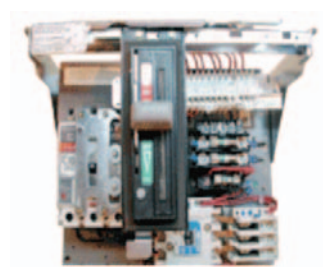
Westinghouse Type W MCC
1965–1975, up to 600V



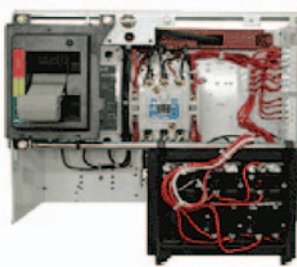
Westinghouse 11-300 MCC
1950–1965, up to 600V



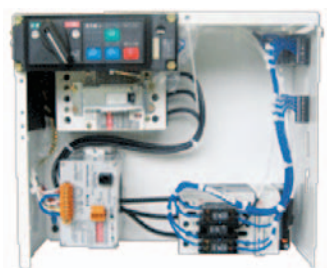
Westinghouse Series 2100/
5 Star MCC, 1975–1994, up to 600V



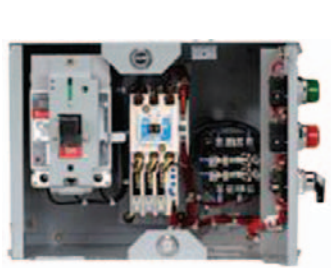
Cutler-Hammer Freedom Unitrol
MCC, 1988–1994, up to 600V



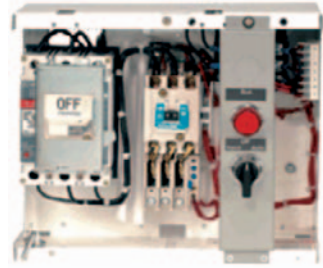
Eaton Freedom 2100 MCC
1994–Present, up to 600V



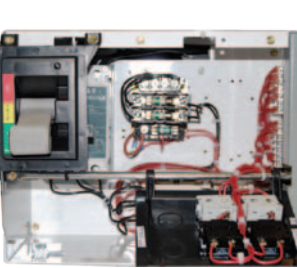
Eaton **IT** MCC
2002–Present, up to 600V



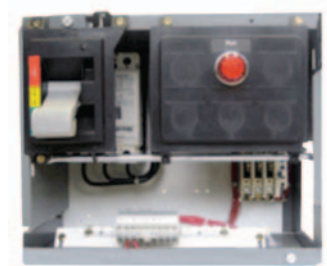
ITE Gould 5600 MCC
1957–1976, up to 600V



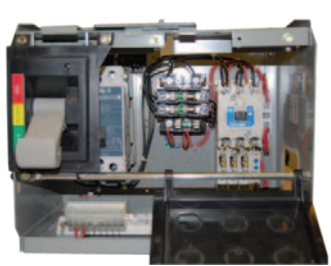
Federal Pacific 5325/5320 MCC
1966–1978, up to 600V



Siemens Furnas Series 89 MCC
1979–2001, up to 600V



Allen-Bradley CENTERLINE®
MCC Series K and Later
1971–Present, up to 600V



Square D Model 6 MCC
1992–Present, up to 600V



GE 7700/8000 MCC
1975–Present, up to 600V



Eaton FlashGard MCC
2008–Present, up to 600V
FlashGard units can be retrofitted
in the following vintages of MCCs:

- FlashGard **IT**.
- F2100
- Series 2100/5 Star

LOW VOLTAGE MOTOR CONTROL BUCKET REPLACEMENTS, CONTINUED



Moeller MCC 80, 90, 200
1959–1997, up to 600V



Moeller MODAN 3000
1997–Present, up to 600V



Moeller MCC 3000
1997–Present, up to 600V

REMOTE RACKING PRODUCTS



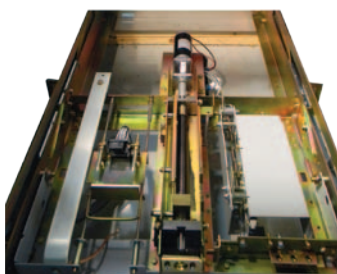
RPR-2 MV and LV Switchgear
Remote Racking Device



Ampgard MV Starter
ISO Switch Operator



MRR 1000



VCP-W Cell-Mounted
Remote Racking Device



FlashGard LV MCC
Remote Racking Device

SERVICES

Service	Description
Partial discharge	Analysis, bus replacement, bus bracing
Medium voltage relay replacements	Pre-wired door replacement program
Arc-flash studies	Initial analysis and recommendations
Arc-flash solutions	Implement recommendations
Medium voltage drives	Replace old methods of variable speed motor control
Crisis response	Nationwide support teams, mobile command centers aid in recovering from fires, floods, explosions
Electrical system studies	Power system, grounding and coordination studies
Switchgear and breaker upgrade and reconditioning	Switchgear updates, including reconditioning or replacement of MV and LV circuit breakers
Outdoor substation services	Transformer and breaker testing, maintenance and repair
Relay services	Relay testing, replacement and NERC compliance
Low voltage motor control	Upgrade or replace aging MCC buckets
Excitation control	Turnkey replacement of generator excitation systems
High resistance grounding	Conversion to high resistance grounding system

Eaton is dedicated to ensuring that reliable, efficient and safe power is available when it's needed most. With unparalleled knowledge of electrical power management across industries, experts at Eaton deliver customized, integrated solutions to solve our customers' most critical challenges.

Our focus is on delivering the right solution for the application. But, decision makers demand more than just innovative products. They turn to Eaton for an unwavering commitment to personal support that makes customer success a top priority. For more information, **visit www.eaton.com/electrical**.

Eaton
1000 Eaton Boulevard
Cleveland, OH 44122
United States
Eaton.com

© 2013 Eaton
All Rights Reserved
Printed in USA
Publication No. PA083001EN / Z13766
March 2013

Eaton is a registered trademark.

All other trademarks are property
of their respective owners.



Powering Business Worldwide